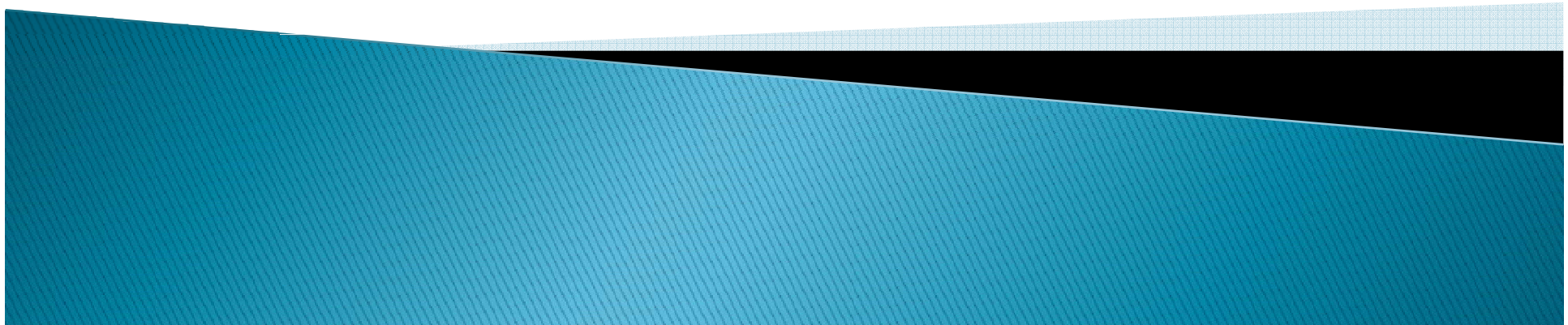


DigitalPersona Pro

digitalPersona Pro is a secure, easy-to-use, and powerful solution for protecting your digital assets. It provides a single point of control for managing your digital identity and protecting your data from unauthorized access. digitalPersona Pro is available in two versions: digitalPersona Pro and digitalPersona Pro for Mac OS X.



IT WORKS
Everything Works



AUTHENTICATION FACTORS

Authentication factors are something you:

- ▶ Have – token
 - Key fob, computer or phone (device), smart card, or code card
- ▶ Know – secret
 - Password, PIN, or OTP.
- ▶ Are – biometric
 - Fingerprint, voiceprint, hand geometry, or iris/eye.

FINANCIAL IT CHALLENGES

▶ Stricter Password Policies

- Increases the likelihood that users compromise their secrecy by writing them down or sharing them.
- Increases calls to the help desk

▶ Password Management Costs

- 40% of all help desk calls are for forgotten passwords
- Annually, companies spend up to \$150 per user trying to maintain secure passwords. (The Gartner Group)

▶ Balancing compliance with user's need for quick access to data

- In an emergency, getting data quickly is more important to the user than security.
- Often employees are not participating willingly with guidelines.
- Administrator nightmare to enact and enforce.

REGULATORY COMPLIANCE

Risk-based approach : RBA (Thai Securities and Exchange Commission)

- Prudential risk
- Operational/management risk
- Customer relationship risk
- Information technology risk

Gramm-Leach Bliley Act (GLBA)

- Customer data must be kept secure & confidential
- Defend against anticipated threats / unauthorized access
- Penalties range from \$10,000 - \$1,000,000

FFIEC Guidelines

- Financial institutions need to use two-factor authentication for online transactions

State Data Breach Laws

Sarbanes-Oxley Act 2002

- Executives & Board must attest to internal controls and certify accuracy of financial statements
- Executives & Board are personally liable

Basel II Accord

- Factors Operational Risk (includes information security) into the calculation of total capital requirements

BENEFITS TO THE ENTERPRISE

Security with Convenience

Improves Network Security

Manage *"inside the firewall"* security vulnerabilities

Reduces IT Support Costs

Eliminate password related help desk overhead

Assists in Regulatory Compliance Efforts

Address major security/privacy regulations

Detailed audit logs

A COMPREHENSIVE AUTHENTICATION SOLUTION

DigitalPersona Pro Server

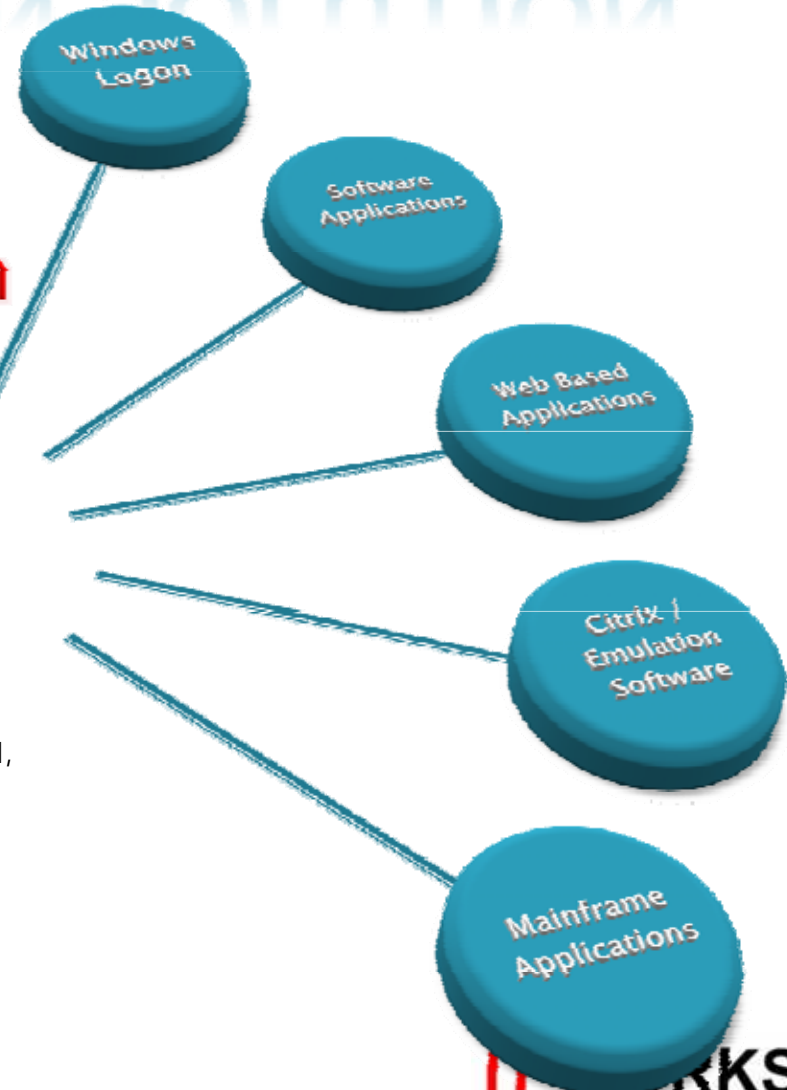


Microsoft® Windows Server 2003 or 2000 and Small Business Server 2003 R2 with Active Directory

DigitalPersona Pro Workstation



Microsoft Windows Vista (Enterprise, Ultimate and Business), XP Professional, Server 2003 or 2000



WORKS
Everything Works

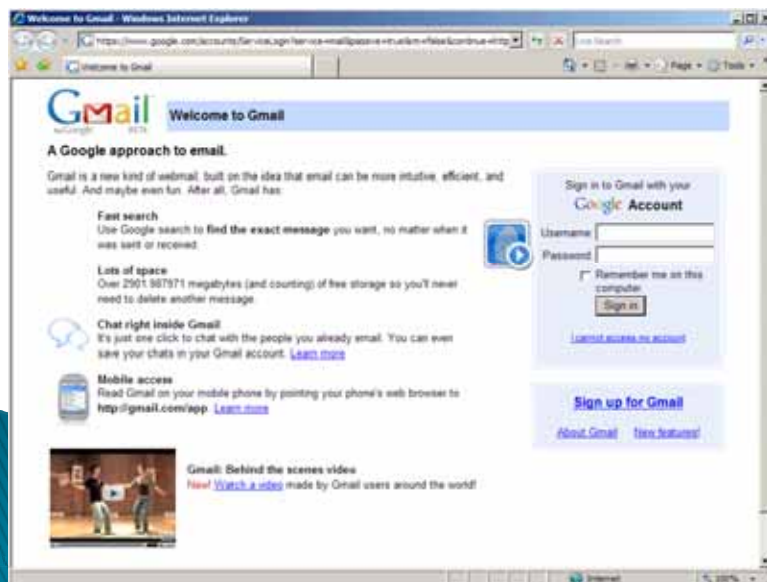
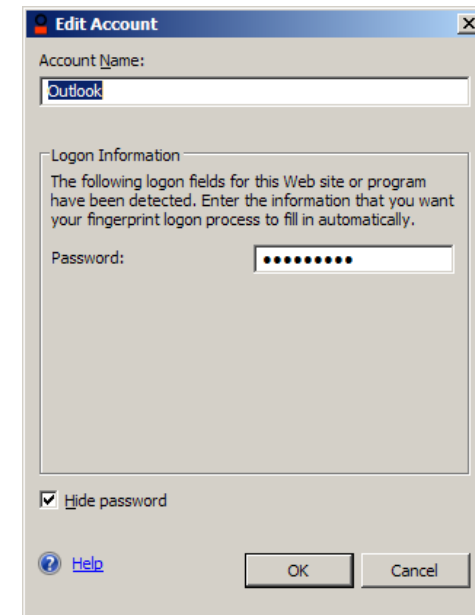
ONE TOUCH LogON



Provides fingerprint-based authentication to Windows

- Supports Vista's Credential Provider and User Account Control
- Replaces standard Windows logon dialog box (GINA) in Windows XP

ONE TOUCH SIGNON



Provides fingerprint-based sign-on to applications, Web sites and any combination of username/password log-on

ONE TOUCH SIGNON-SET UP

OTS Logon Screen Wizard

Welcome to the OTS Logon Screen Wizard

This wizard helps you set up a template to enable fingerprint logon for programs or Web sites.

Launch the program or browse to the Web site that contains the logon screen for which you want to enable fingerprint logon. Logon screen detected:

Welcome to Gmail

☐ Set up a template manually

To continue, click Next.

< Back Next > Cancel

Sign in to Gmail with your Google Account

Username:

Password:

☐ Remember me on this computer

Sign in

[I cannot access my account](#)

Select Account Data

More than one set of account information exists for this logon screen. Choose the account information you want to use.

<input checked="" type="radio"/> Gmail-Polapat
<input type="radio"/> Gmail-Polapat.Udomphol

OK Cancel

Multiple accounts on the same sign on page

OTS Logon Screen Wizard

Logon Fields

Specify attributes for the logon fields.

Specify the attributes for the fields on logon screen and then click Next. For Value, specify the required action after the user provides a fingerprint.

Use	Label	Type	Catalog	Value
<input checked="" type="checkbox"/>	Username:	Text	<Not from catalog>	Ask - Reuse
<input checked="" type="checkbox"/>	Password:	Pass...	<Not from catalog>	Ask - Reuse
<input type="checkbox"/>	Remember m...	Chec...	<Not from catalog>	Ask - Reuse

< Back Next > Cancel

OTS Logon Screen Wizard

Submit Option

OTS may submit the logon data automatically.

Choose the button that submits the logon data from the list below. Click Do Not Submit if you do not want to automatically submit logon data.

Detected buttons:

☐ Do Not Submit

☒ Sign in

< Back Next > Cancel

ONE TOUCH SIGNON_{-SET UP}



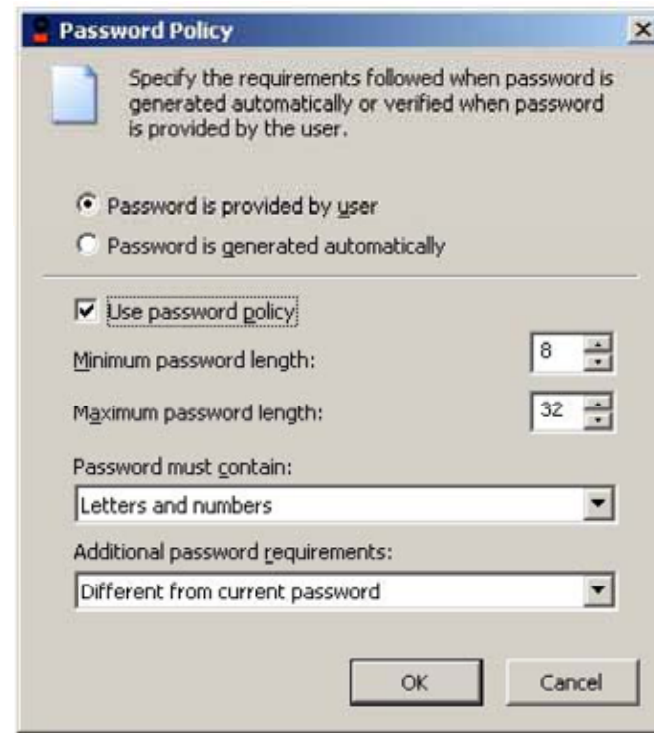
OTS Change Password Screen Wizard

Password Policy
Specify policy for the protected logon fields.

To specify the password policy for a protected field, select the corresponding Field policy, and then click a button, which is shown on the right side.

Logon field	Field policy
Password	<None>

< Back Next > Cancel



Password Policy

Specify the requirements followed when password is generated automatically or verified when password is provided by the user.

☒ Password is provided by user
☐ Password is generated automatically

☒ Use password policy

Minimum password length: 8

Maximum password length: 32

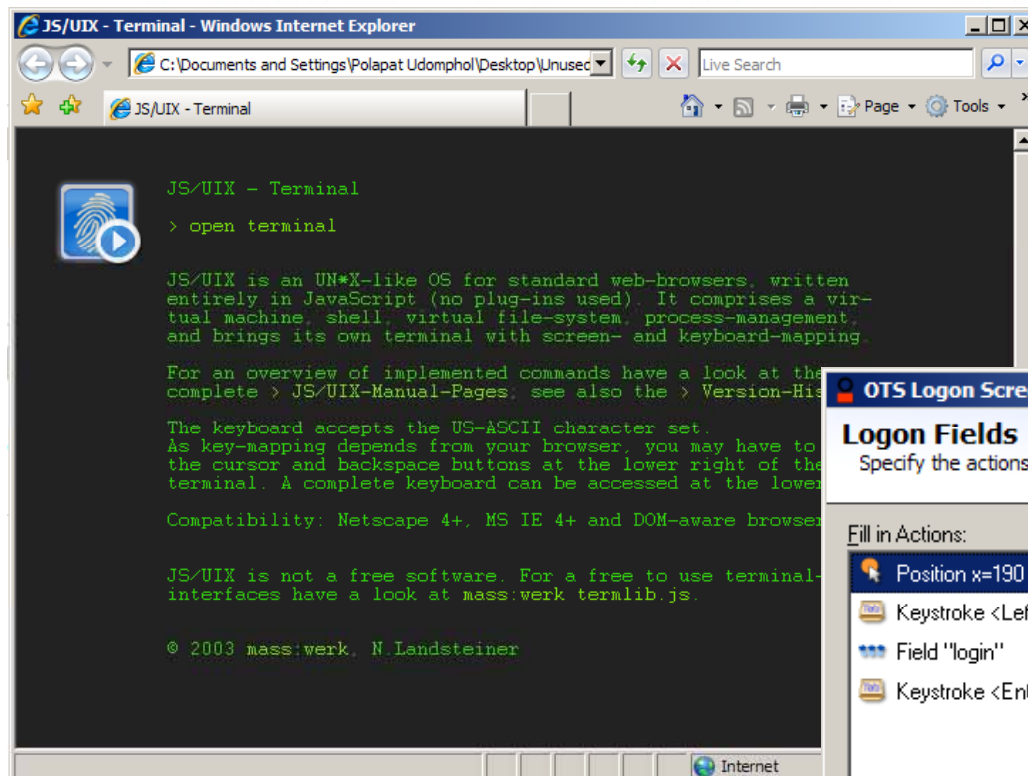
Password must contain:
Letters and numbers

Additional password requirements:
Different from current password

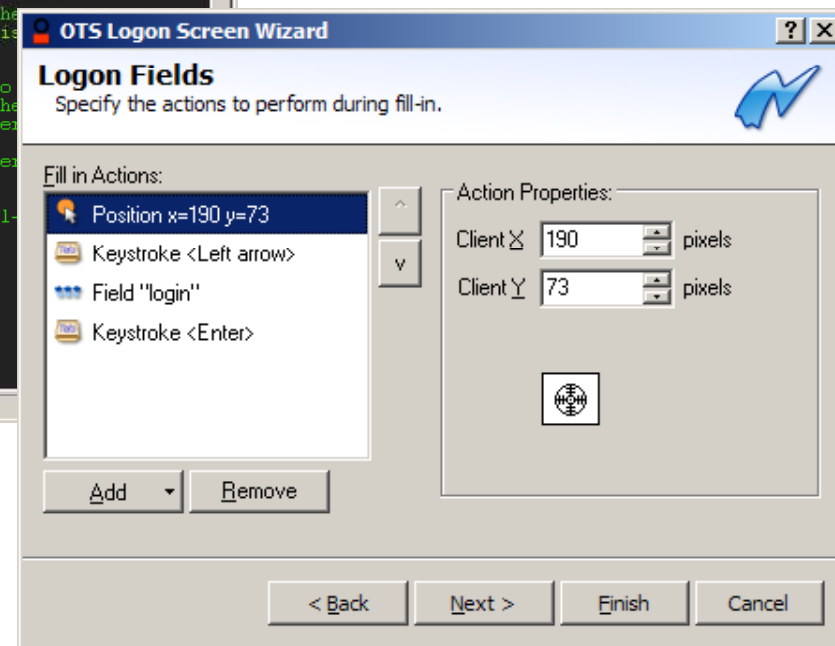
OK Cancel

Automated password change screen

ONE TOUCH SIGNON -SET UP

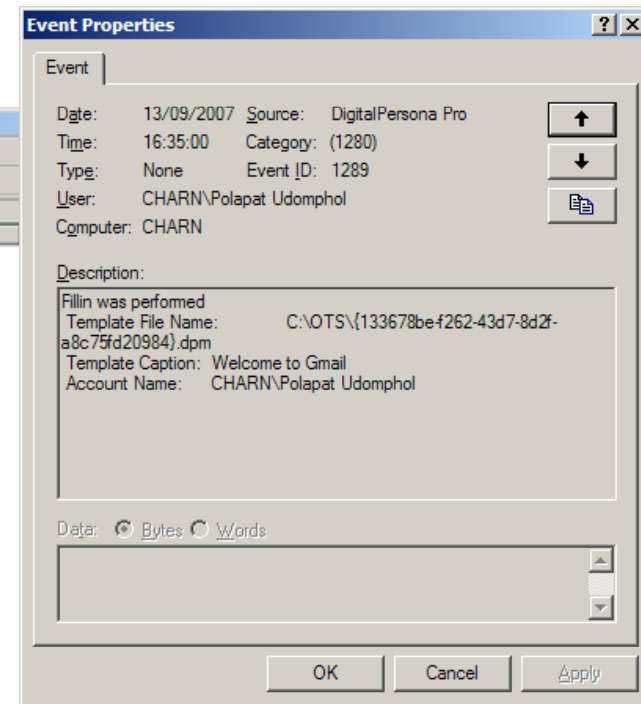
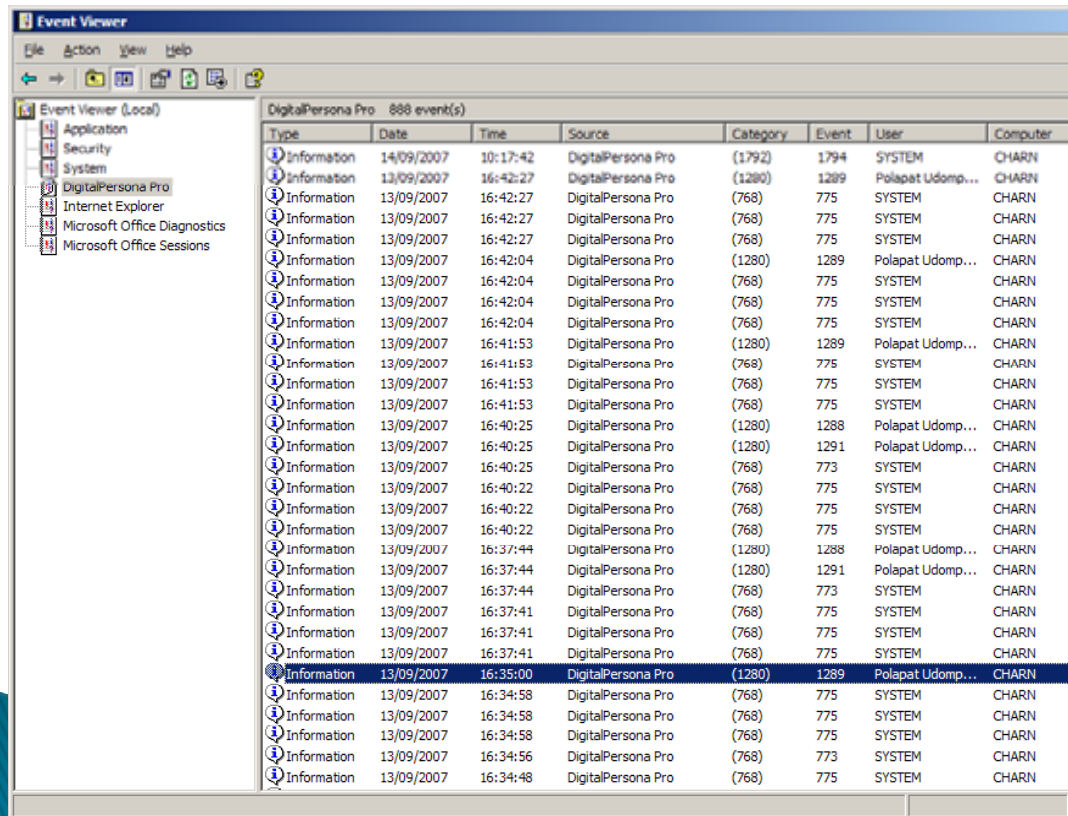


Work with
legacy system



AUDIT LOGS

Provides compliance with government regulations



FINGERPRINT READER

Digital Persona Fingerprint Reader



Third-party swipe readers



DELL

hp
invent

lenovo

TOSHIBA

FUJITSU

acer

ITRONIX
A GENERAL DYNAMICS COMPANY



IT WORKS
Everything Works

AWARDS AND SITE REFERENCES



"Over 90 million users worldwide"

Financial Services



Healthcare



Energy



International



Retail/POS



State/Local/Gov



Education



Others

